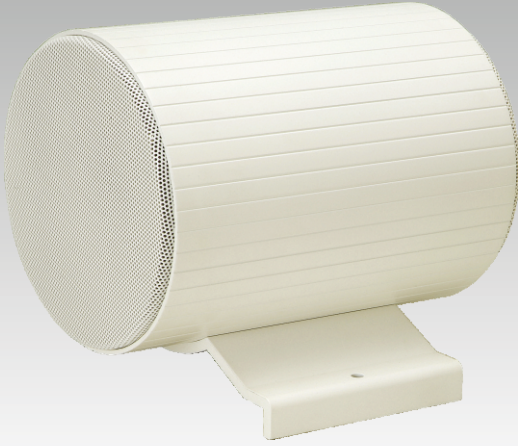


METALLIC BI-DIRECTIONAL SOUND PROJECTOR



Aluminium Alloy

SPECIFICATIONS:

Model NO.	SPJ-52WH
Speaker	5" P.P CONE+ HC × 2pcs
Power Rating(100V)	20W - 10W - 5W
Impedance	500Ω - 1KΩ - 2KΩ
S.P.L(at 1W/1M)	89dB
Maximum Acoustic Pressure	101dB
Frequency Response(-10dB)	120 Hz ~ 20K Hz
Dispersion 1KHz / 4KHz	130° : 130° / 50° : 50°
Ambient Temperature	-25°C ~ +70°C
Compliant Standard	n.a
IP Rating	IEC60529 IP66
Dimension	146(Dia.)×186(H)mm
Material	Aluminum Alloy
Colour	White
Weight	3.3Kg
Mounting Bracket	Extruded Aluminum Bracket
Power Selection Method	4-core cable

